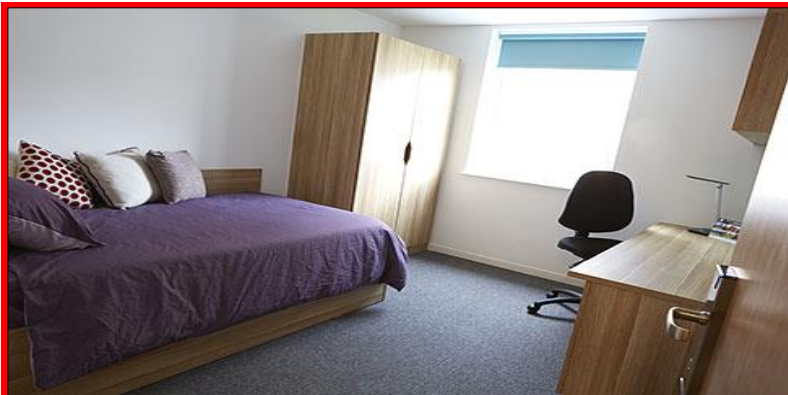


Nationwide were highly delighted to be awarded the Joinery 'Fit-out' package upon this Birley Fields Student Accommodation development (officially titled 'Birley Fields Residences') for G.B. Building Solutions in Hulme, central Manchester. Consisting of 967 'Beds' through a mixture of traditional Student Apartments along with impressive four-storey townhouses which house large communal living and kitchen areas whilst also affording the residents private garden areas.

A key element of the project is its environmental credentials, which are an essential part of MMU's overall commitment to making Birley Fields a zero energy, waste and water campus. It benefits from a district heating system provided by a new energy centre installed as part of the wider campus development. We supplied and installed our standard package items such as Doors, Frames, Architraves and Ironmongery sets and also installed Timber Doors to the previously installed p.v.c. W.C. Pods. Although the programme became truncated in the early weeks of our works, we enlisted the support of our extensive bank of Joiners and still managed complete on time for the September 2014 intake.



Birley Fields Student Accommodation,
Hulme, Manchester
G.B. Building Solutions



£ 1'000'000